

# TSC

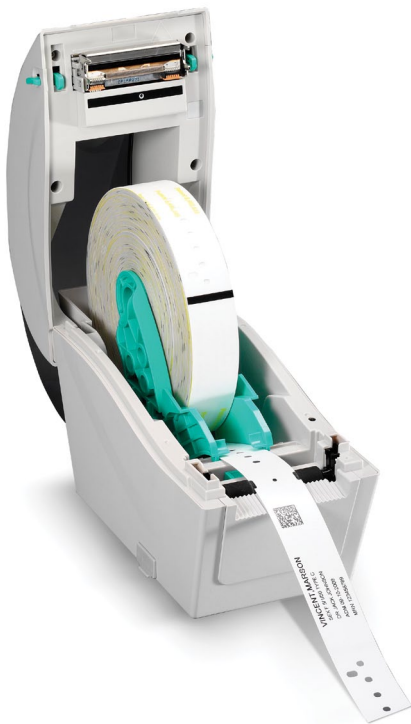
The Smarter Choice.

CELEBRATING 20 YEARS



## TDP-324W SERIES – Desktop Direct Thermal Wristband Printers

# EVERY FEATURE YOU NEED FOR MEDICAL AND ENTERTAINMENT WRISTBAND PRINTING



### KEY FEATURES

- High resolution 300 dpi printer, also available in 203 dpi resolutions
- Can use any roll of wristbands from any supplier
- Save up to 50% on cost of wristbands
- Designed to hold 6.5" OD wristbands
- Front LCD display
- High quality double-walled clamshell design
- Easy media loading
- Up to 127 mm (5") per second print speed
- microSD Flash memory expansion up to 4 GB
- Ethernet and USB 2.0 connectivity standard
- Optional peel-off module, cutter module and down-time keyboard interface
- Can be programmed to work without a computer attached
- Cerner Certified and works in any hospital system

### APPLICATIONS

- **Healthcare**
  - Patient ID Tracking
  - Hospital Admissions
  - Hospital Nursery
- **Entertainment & Hospitality**
  - Amusement Parks
  - Water Parks
  - Event Admissions
  - Night Club Age Verification
- **Other Markets**
  - Law Enforcement
  - Crowd Control
  - Animal ID
  - Restricted Area Access

## TDP-324W SERIES – Desktop Direct Thermal Wristband Printers

PRINTER MODEL	TDP-225W	TDP-324W
Resolution	8 dots/mm (203 DPI)	12 dots/mm (300 DPI)
Printing method	Direct Thermal	
Max. print speed	127 mm (5")/second	102 mm (4")/second
Max. print width	52 mm (2.05")	48 mm (1.89")
Max. print length	2,286 mm (90")	1,016 mm (40")
Enclosure	Clamshell design with wall mount hole at the bottom cover	
Physical dimension	109 mm (W) x 210 mm (H) x 260 mm (D) 4.29" (W) x 8.27" (H) x 10.24" (D)	
Weight	1.2 kg (2.65 lbs)	
Label roll capacity	165 mm (6.5") OD	
Processor	32-bit RISC CPU	
Memory	<ul style="list-style-type: none"> <li>• 4 MB Flash memory</li> <li>• 8 MB SDRAM</li> <li>• microSD card reader for Flash memory expansion, up to 4 GB</li> </ul>	
Interface	<ul style="list-style-type: none"> <li>• USB 2.0</li> <li>• Internal Ethernet, 10/100 Mbps</li> <li>• USB host, for scanner or PC keyboard (factory option)</li> </ul>	
Power	External universal switching power supply <ul style="list-style-type: none"> <li>• Input: AC 100-240V, 1A, 47-63Hz</li> <li>• Output: DC 24V, 2.08A, 50W</li> </ul>	
LCD	Graphic type, 128 x 64 pixels, with back light	
Operation switch, button LED	1 power switch, 1 feed button & 1 LED (3 colors: green, amber & red)	
Sensors	<ul style="list-style-type: none"> <li>• Transmissive gap sensor</li> <li>• Black mark reflective sensor (position adjustable)</li> <li>• Head open sensor</li> </ul>	
Real time clock	Standard	
Internal fonts	<ul style="list-style-type: none"> <li>• 8 alpha-numeric bitmap fonts</li> <li>• Monotype Image® true type font engine with one CG Triumvirate Bold Condensed scalable font</li> </ul>	
Bar code	<ul style="list-style-type: none"> <li>• 1D bar code Code 39, Code 93, Code 128UCC, Code 128 subsets A, B, C, Codabar, Interleave 2 of 5, EAN-8, EAN-13, EAN-128, UPC-A, UPC-E, EAN and UPC 2 (5) digits add-on, MSI, PLESSEY, POSTNET, China POST, GS1 DataBar, Code 11</li> <li>• 2D bar code PDF-417, Maxicode, DataMatrix, QR code, Aztec</li> </ul>	
Font and barcode rotation	0, 90, 180, 270 degree	
Printer language	TSPL-EZ™	
Media type	Continuous, die-cut, black mark, fan-fold, notched, wristband (outside wound)	
Media width	15 ~ 52 mm (0.59" ~ 2.05")	
Media thickness	0.06 ~ 0.19 mm (2.36 ~ 7.48 mil)	
Media core diameter	25.4 mm (1")	
Label length	10 ~ 2,286 mm (0.39" ~ 90")	10 ~ 1,016 mm (0.39" ~ 40")
Environment condition	Operation: 5 ~ 40°C, 25 ~ 85% non-condensing Storage: -40 ~ 60°C, 10~ 90% non-condensing	
Safety regulation	FCC Class B, CE Class B, C-Tick Class B, UL, CUL, TÜV/Safety, CCC	
Environmental concern	Comply with RoHS, WEEE	
Accessories	<ul style="list-style-type: none"> <li>• Windows labeling software CD disk</li> <li>• Quick start guide</li> <li>• USB cable</li> <li>• Power cord</li> <li>• External universal switching power supply</li> </ul>	
Limited warranty	<ul style="list-style-type: none"> <li>• Printer: 2 years</li> <li>• Print head: 25 km (1 million inches) or 12 months which comes first</li> <li>• Platen: 50 km (2 million inches) or 12 months which comes first</li> </ul>	
Factory options	<ul style="list-style-type: none"> <li>• USB host, for scanner or PC keyboard</li> </ul>	
Dealer options	<ul style="list-style-type: none"> <li>• Peel-off module</li> <li>• Guillotine cutter (full cut and partial cut)</li> </ul>	
User options	N/A	



**TSC**  
The Smarter Choice.

CELEBRATING 20 YEARS

### CORPORATE HEADQUARTERS

**TSC Auto ID Technology Co., Ltd.**

Tel: +886 2 2218 6789

E-mail: apac\_sales@tscprinters.com

### LI ZE PLANT

**TSC Auto ID Technology Co., Ltd.**

Tel: +886 3 990 6677

E-mail: apac\_sales@tscprinters.com

### AMERICAS

**TSC Auto ID Technology America Inc.**

**Corporate Office**

Tel: +1 909 525 9779

E-mail: americas\_sales@tscprinters.com

### Orlando Office

Tel: +1 407 704 8918

E-mail: americas\_sales@tscprinters.com

### CANADA

**TSC Auto ID Technology America Inc.**

Tel: +1 909 525 9779

E-mail: americas\_sales@tscprinters.com

### MEXICO

**TSC Mexico Representative Office**

Tel: +52 (33) 3836 6682

E-mail: americas\_sales@tscprinters.com

### BRAZIL

**TSC Brazil Representative Office**

Tel: +55 (11) 9597 8098

E-mail: americas\_sales@tscprinters.com

### EMEA

**TSC Auto ID Technology EMEA GmbH**

Tel: +49 (0) 8106 37979 00

E-mail: emea\_sales@tscprinters.com

### RUSSIA

**TSC Auto ID Technology EMEA GmbH**

Tel: +7 915 422 8889

E-mail: emea\_sales@tscprinters.com

### MIDDLE EAST

**TSC Auto ID Technology ME Ltd, FZE**

Tel: +971 4 2533 069

E-mail: emea\_sales@tscprinters.com

### ASIA PACIFIC

**TSC Auto ID Technology Co., Ltd.**

Tel: +886 2 2218 6789

E-mail: apac\_sales@tscprinters.com

### CHINA

**Tianjin TSC Auto ID Technology Co., Ltd.**

Tel: +86 22 5981 6661

E-mail: apac\_sales@tscprinters.com

TSC® is a trademark of TSC Auto ID Technology Co., Ltd.  
TSC Auto ID Technology Co., Ltd. is an ISO 9001/14001 registered company.  
© 2014 TSC Auto ID Technology Co., Ltd.  
Product models and Specifications are subject to change without notice.  
Contact your TSC sales representative for specific information.